

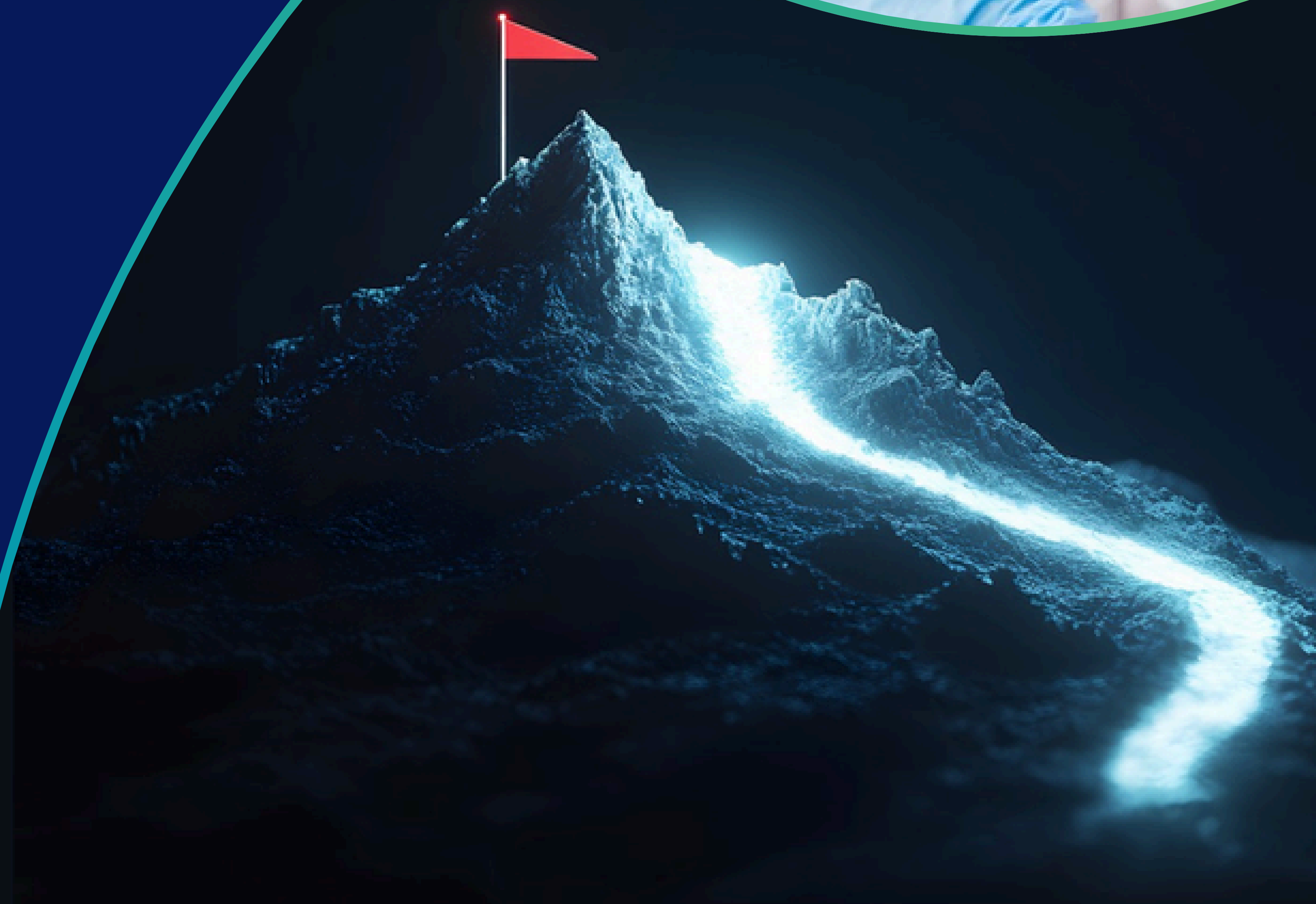
# Pathfinder New Lab Start-Up Program

At your side from day one,  
empowering your path in  
growth and discovery.



**REGISTER NOW**

+1 833-429-2629  
info@yamaybio.com  
www.yamaybio.com



## Grow with Pathfinder

### Empowering scientists to explore, discover, and lead.

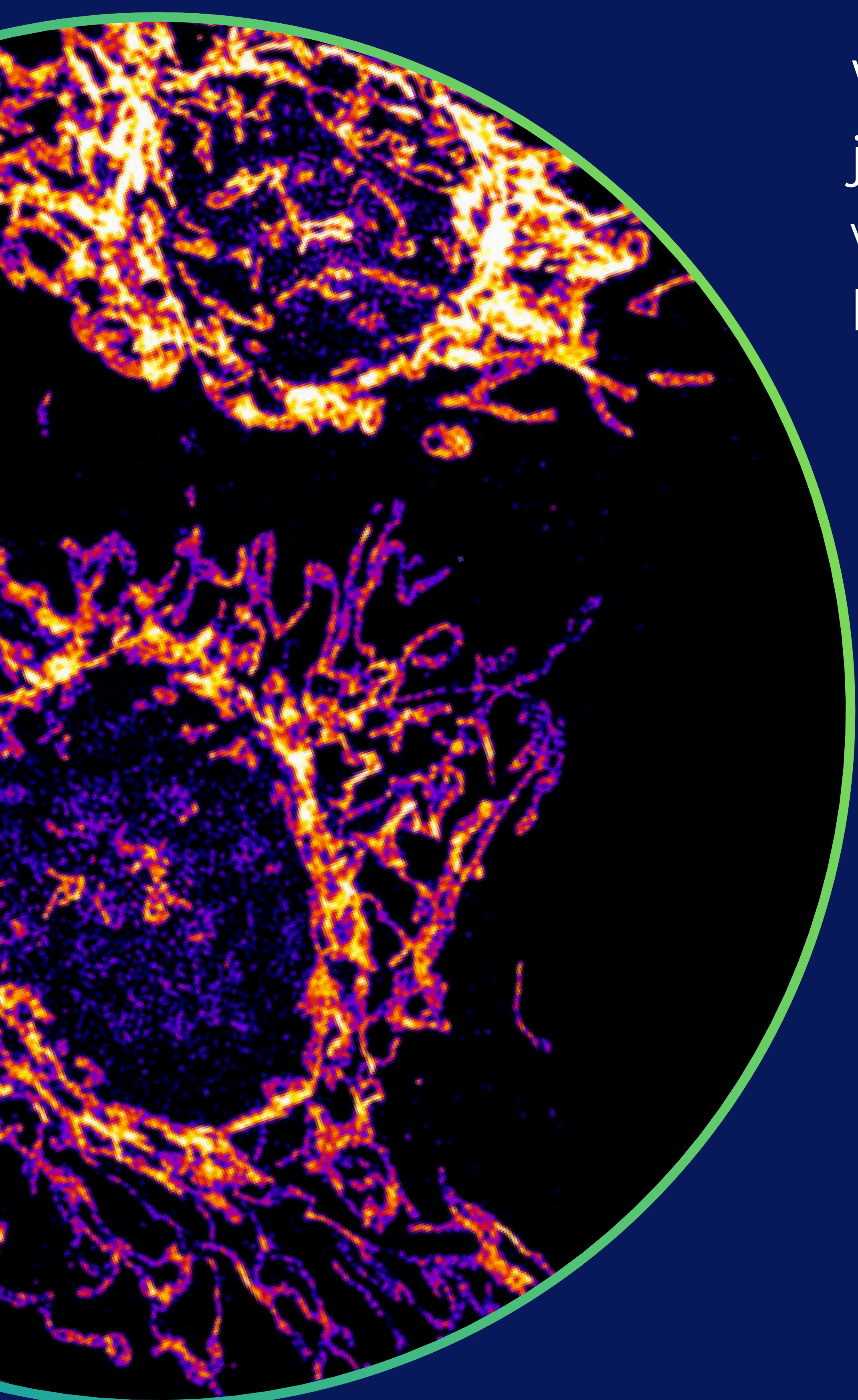
**YamayBio** believes that every scientist is a pioneer. Exploring the unknown, pushing boundaries, and shaping the future of science.

We know this stage of your journey is both inspiring and challenging: balancing ambition with limited resources, navigating complex experiments, and building the foundation for future leadership.

The **Pathfinder New Lab Start-Up Program** is our way of walking this path with you. Whether you are a postdoctoral researcher, a newly independent PI, or an established investigator opening or relocating a laboratory, the program offers essential reagents and consumables, personalized product guidance, and expert support.

This gives you everything you need to advance your work with confidence.

We understand the complexities of your research journey, and we are here not just to assist but to grow with you, empowering your path from discovery to leadership.



# COLOR YOUR RESEARCH BRIGHTEN YOUR DAY!

## Growth & Partnership Focus

### YamayBio helps you grow with trusted research essentials.

Our partnership begins with listening. Together, we identify the right reagents, equipment, consumables, and guidance to help your science move forward with confidence.



#### Reagents

Our product portfolio spans four essential lines to meet diverse research needs:

- Western Blotting Products
- Cell Culture Products
- ELISA Kits
- Antibodies



#### Equipment

We supply the critical instruments for a smooth Western Blot process, including:

- Gel Casting Systems
- Multi-Rapid Membrane Transfer Systems
- Incubation Workstations
- Imaging Systems



#### Consumables

To complement our reagents and devices, we offer high-quality consumables, including electrophoresis tanks and cassettes, blotting papers, sponges, and other WB-related accessories. These products are designed to ensure consistency and reliability throughout your workflow.





## Growth & Value Focus

**The Pathfinder partnership offers more than savings. It delivers dedicated support.**

YamayBio empowers your research with high-quality reagents, reliable consumables, expert guidance, and collaborative opportunities, from your first experiments to future scientific leadership.



### **Exclusive Cost Savings**

- One-time 50% discount on ALL reagents, up to a \$5,000 value
- One-time 50% discount on ALL consumables, up to a \$5,000 value



### **Academic YamayBio Team Support**

- Product selection and experimental setup consultation
- Regulatory and compliance support



### **Co-Creation With YamayBio Social Media Accounts**

- Share case studies, lab experiences, or collaborative publications
- Inspire fellow scientists to find their own path

## **Not sure if you are eligible?**

- Visit our website at <https://www.yamaybio.com/Pathfinder-Lab-Program/15>
- Contact our local sales representative for personalized assistance
- Email us at [info@yamaybio.com](mailto:info@yamaybio.com)  
(Please reference “Pathfinder New Lab Start-Up Program” in your email.)