



YamayBio

Multicolor Prestained NIR Protein Ladder 10-250 kDa

USER MANUAL

For research use only.
Not for use in diagnostic procedures.



Contents and Storage

Multicolor Prestained NIR Protein Ladder 10 kDa~250 kDa

CY5468-500 250 µL×2

CY5468-2500 250 µL×10

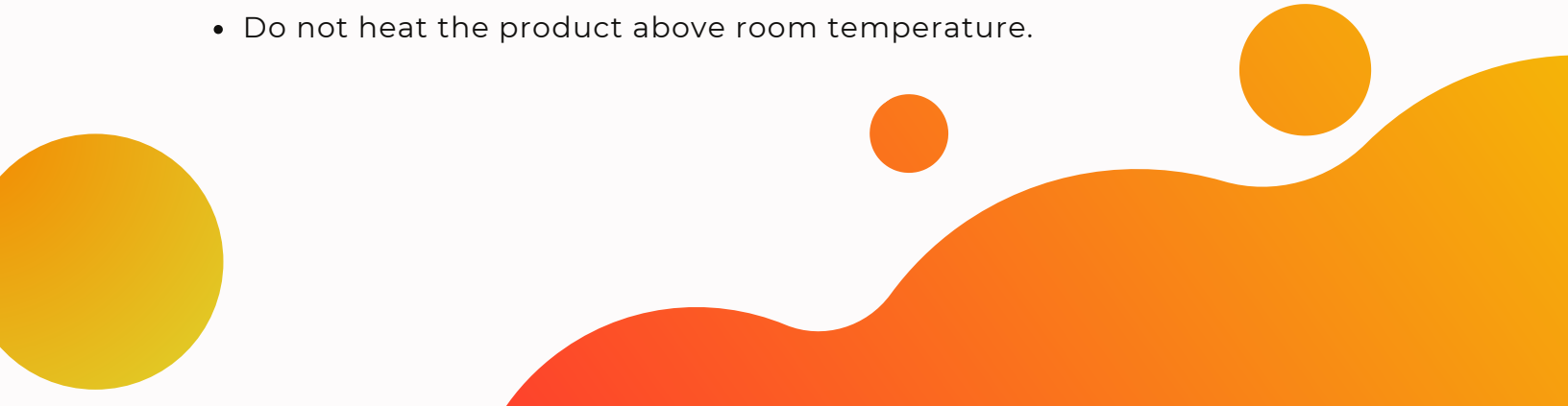
Storage: Store at 4 °C for 6 months or store at -20 °C for 24 months.
The product is shipped at room temperature.

Introduction

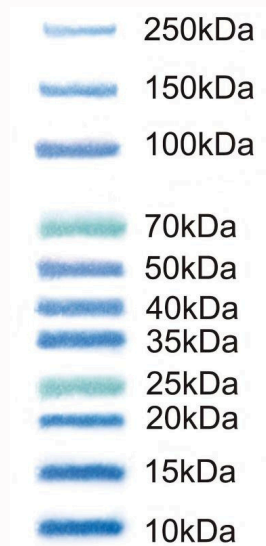
The Multicolor Prestained NIR Protein Ladder is a dual color prestained protein marker optimized for near infrared fluorescence imaging applications. It contains eleven distinct protein bands ranging from 10 to 250 kDa (10, 15, 20, 25, 35, 40, 50, 70, 100, 150, and 250 kDa). The 25 kDa and 70 kDa bands are labeled with a green dye, allowing real time monitoring of electrophoretic migration and convenient estimation of protein molecular weights.

Storage Buffer: 62.5 mM Tris-HCl (pH 7.5 at 25 °C), 1 mM EDTA, 2% (w/v) SDS, 10 mM DTT, 0.02% NaN₃, 33% (w/v) glycerol.

Instructions for Use

- Multicolor Prestained Protein Ladders are provided in sample buffer, ready to load, with no dilution required.
 - Allow the tube to equilibrate to room temperature and mix thoroughly before use to make sure that any precipitated material is fully dissolved.
 - Do not heat the product above room temperature.
- 

Multicolor Prestained NIR Protein Ladder 10 to 250 kDa



4%-20% Tris-Glycine SDS-PAGE

Recommended Loading Volumes

| Load Volume | Application |
|--------------|--|
| 5-7 μ L | Blotting Mini gels (8.3 \times 6.4 cm) and Midi gels (13.3 \times 8.7 cm) |
| 7-10 μ L | Large gels (18.3 \times 19.3 cm) electrophoresis and 1.5 mm thick gels |

Migration Patterns of Prestained Protein Ladders

| Gel type | | Tris-Glycine | | | | | | Bis-Tris | | | | | |
|-------------------|-----|-------------------------------|------|-----|-------|-----|-------|----------|-----|-----|-------|-------|--|
| Gel concentration | | 6% | 7.5% | 10% | 12.5% | 15% | 4-20% | 8% | 10% | 12% | 4-12% | 4-20% | |
| Running buffer | | Tris-Glycine | | | | | | MOPS | | | | | |
| | | Apparent Molecular Size (kDa) | | | | | | | | | | | |
| % Length of gel | 10 | | | | | | | | | | | | |
| | 20 | | | | | | | | | | | | |
| | 30 | | | | | | | | | | | | |
| | 40 | | | | | | | | | | | | |
| | 50 | | | | | | | | | | | | |
| | 60 | | | | | | | | | | | | |
| | 70 | | | | | | | | | | | | |
| | 80 | | | | | | | | | | | | |
| | 90 | | | | | | | | | | | | |
| | 100 | | | | | | | | | | | | |

Related Products

| Product | Cat. No. | Quantity |
|---|----------|------------|
| All-in-One Low Range Protein Gel Kit, Tricine-PAGE, 10% | RF1531 | 10 Assays |
| All-in-One Low Range Protein Gel Kit, Tricine-PAGE, 16% | RF1532 | 10 Assays |
| Stain Free Gradient-like PAGE Gel Kit | RF1541 | 100 Assays |
| One-Step Stain-Free PAGE Gel Rapid Preparation Kit, 6% | RF1521 | 100 Assays |
| One-Step Stain-Free PAGE Gel Rapid Preparation Kit, 7.5% | RF1522 | 100 Assays |
| One-Step Stain-Free PAGE Gel Rapid Preparation Kit, 10% | RF1523 | 100 Assays |
| One-Step Stain-Free PAGE Gel Rapid Preparation Kit, 12.5% | RF1524 | 100 Assays |
| One-Step Stain-Free PAGE Gel Rapid Preparation Kit, 15% | RF1525 | 100 Assays |