

Animal Nuclear and Cytoplasmic Protein Extraction Kit (High-efficiency Type for WB)

This kit contains powerful detergents. The extracted nuclear proteins not only include nuclear membrane proteins but also contain soluble proteins such as histones and nuclear transcription factors. This kit can shorten the extraction time of nuclear proteins to 10 minutes. In addition, the yield of nuclear proteins extracted by this product is significantly higher than that of other kits, and the effect of nuclear-cytoplasmic separation is remarkable. This kit is dedicated to Western Blot (WB) experiments, which can help researchers obtain excellent results.

Cat. No.	Size
BF7476-50	50 Samples
BF7476-250	250 Samples

Key Features



Unparalleled Yield

Achieve up to 50% greater output.



High Purity

<5% cross-contamination.



Rapid

Completed approximately one hour.



Convenient

No require for gradient centrifugation.



YamayBio

☎ 424-483-8883

✉ info@yamaybio.com

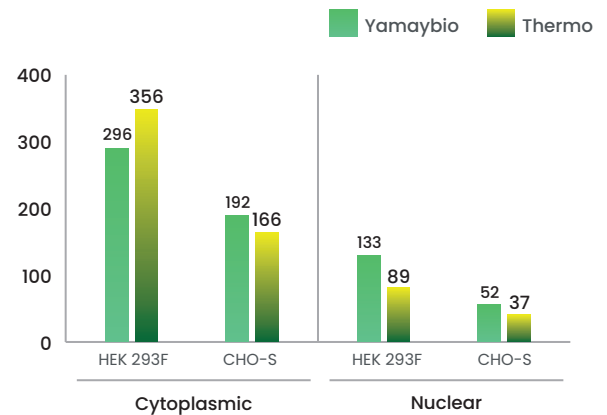
🌐 www.yamaybio.com

📍 12100 Wilshire Blvd Suite 800, Los Angeles, CA 90025, USA

Unparalleled Yield

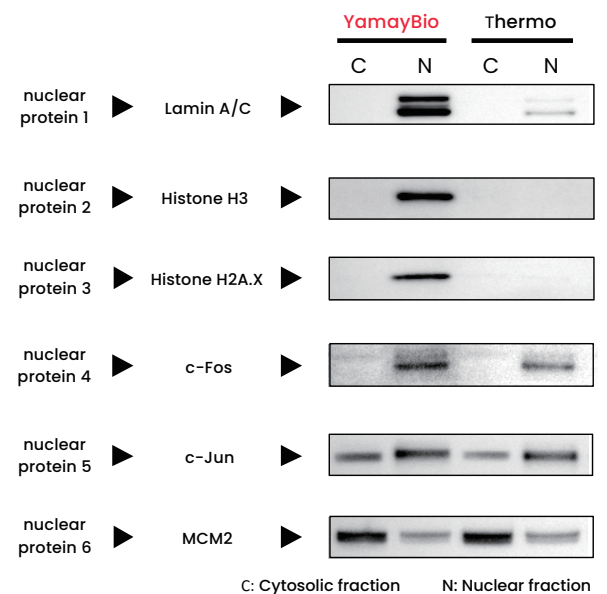
This kit simplifies protein extraction, yielding 200–750 µg of cytoplasmic protein and 100–350 µg of nuclear protein at a concentration of 1 mg/mL from two million HEKK293F cells.

Fig 1. Protein was quantified using Ready-to-use BCA Protein Assay Kit (CAT. No.BH5484). Values are the average of two separate isolations.



Compared to Thermo's kit, YamayBio BF7476 demonstrated a higher yield of nuclear proteins such as Histone H3, Histone H2A.X, and c-Fos, while maintaining comparable yields of cytoplasmic proteins.

Fig 2. WB detection results of nuclear proteins from different kits. Equal amounts (2×10^6) of Expi293F cells were used for each kit. The extraction process was conducted following the manufacturer's instruction.



High Purity

Ensures minimal cross-contamination between nuclear and cytoplasmic proteins, with cross-contamination typically below 5%, providing high-quality nuclear protein extracts for downstream applications.

Fig 3. WB detection results of cytoplasmic proteins from different kits. Take equal amounts (2×10^6) of Expi293F cells respectively. Use two kinds of kits: YamayBio BF7476 and Thermo 78833 to extract nuclear proteins according to their respective instructions. WB experiments were conducted using two different antibodies.

