

Antibody Diluent

Key Features

Enhanced antibody stability and efficiency

Antibodies diluted with this antibody diluent can be stored at 4°C for up to 6 months without the need for repeated freeze-thaw cycles

Highly versatile

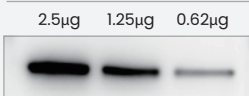
No cross-reactivity with antibodies or target proteins, higher signal-noise ratio compared to non-fat milk and BSA. Suitable for the detection for phosphoproteins

Cat. No.	Size
BM3153 -100	100mL
BM3153 -500	500mL

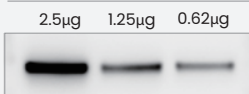
Suitable for Western blot, Immunofluorescence and Immunohistochemistry

1

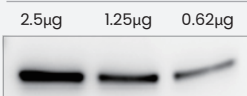
Diluted primary antibody was stored at 4°C for 10 days



Diluted secondary antibody was stored at 4°C for 10 days



Diluted primary antibody was stored at 37°C for 10 days



Diluted secondary antibody was stored at 37°C for 10 days

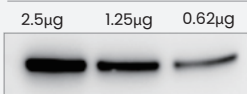


Fig1. Accelerated stability testing of the primary antibody and HRP-conjugated secondary antibody after dilution with antibody diluent (YamayBio Cat.NO.: BM3153). a. Rabbit Anti-GAPDH antibody and b. Goat anti-Rabbit IgG(H + L), HRP-conjugated antibodies were diluted 1:5000 with antibody diluent. The diluted antibodies were then aliquoted into two tubes and stored at 4°C and 37°C for 14 days, respectively. Subsequently, Western Blot analysis was performed. As shown in the figures, the results indicated that the WB bands obtained with the GAPDH antibody and the HRP-conjugated secondary antibody stored at 37°C for 14 days were comparable to those stored at 4°C for 14 days.

2

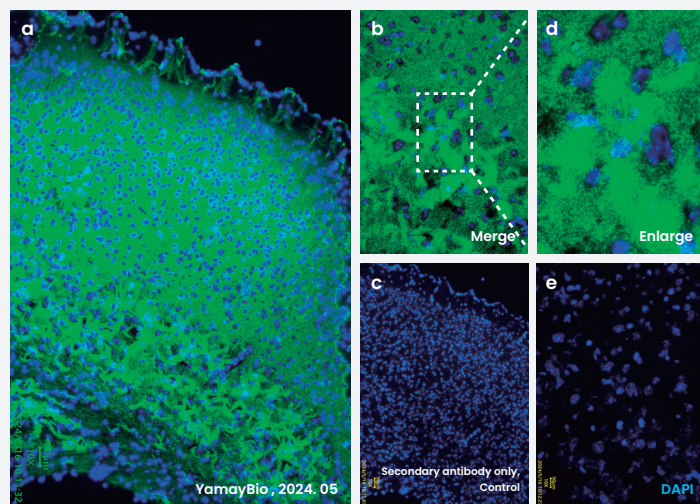


Fig2. Immunofluorescence staining for PSD95 was performed on mouse brain tissue sections using an anti-PSD95 primary antibody diluted 1:100 in antibody diluent (YamayBio Cat. No.:BM3153). A goat anti-rabbit secondary antibody (green fluorescence) was diluted 1:1000 in the same diluent.

3

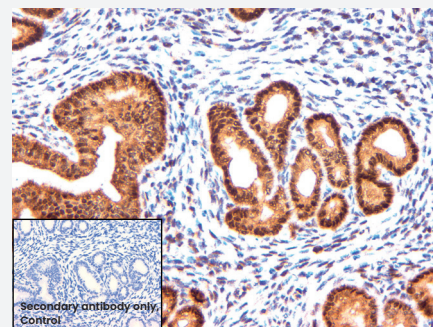


Fig3. Formalin-fixed, paraffin-embedded mouse uterine tissue sections were undergo immunohistochemical staining for ER alpha. Anti-ER alpha antibody was diluted in antibody diluent (YamayBio Cat. No.:BM3153) prior to incubation with the tissue sections.

☎ 424-483-8883

✉ info@yamaybio.com

🌐 www.yamaybio.com

📍 12100 Wilshire Blvd Suite 800, Los Angeles, CA 90025, USA