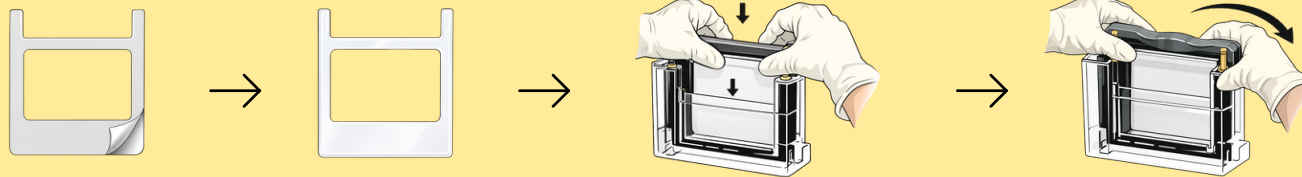


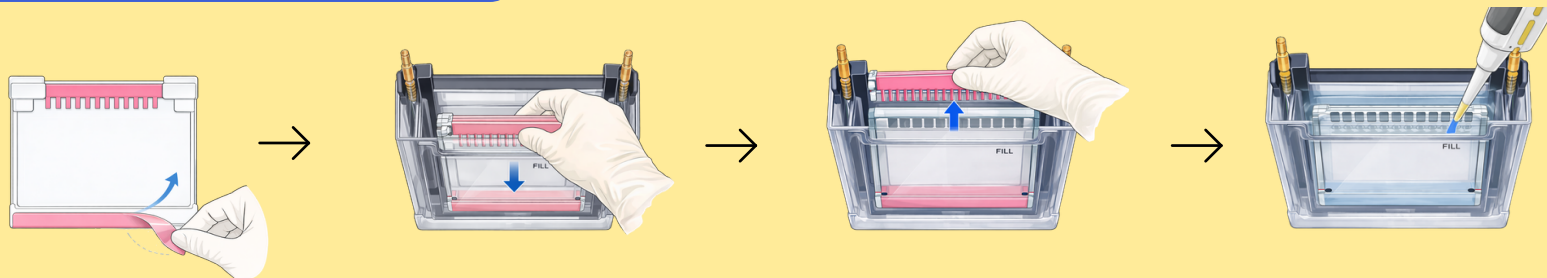
HOW TO USE THE ADAPTER FOR INVITROGEN

1 POSITION ADAPTER



1. Remove the protective films from both sides of the adapter buffer dam. Ensure the adapter is clear after the films are removed.
2. Insert the adapter into the Mini Gel Tank and press the adapter to the bottom of the chamber.
3. Clamb it to ensure proper positioning.

2 Position Precast Gel



1. Remove the protective film from the precast gel and place the precast gel **behind** the adapter, ensuring it is not pressed fully to the bottom of the chamber. Otherwise, running buffer may leak from the chamber.
2. Lift the precast gel slightly to align it evenly with the adapter. Secure the clamp to fix the position. Remove the comb.
3. Add a running buffer and proceed with sample loading.