

Animal Membrane and Cytosol Protein Extraction Kit

This kit provides a streamlined and efficient method for the isolation of membrane and cytosolic proteins from animal cells and tissues. The membrane protein fraction includes plasma membrane proteins as well as proteins associated with mitochondrial, endoplasmic reticulum, and Golgi membranes.

Cat. No.	Size
BF7475-10	10 Samples
BF7475-50	50 Samples

Key Features

High Yield

Up to 0.4-0.6 mg of membrane protein can be extracted from 5×10^6 cells, delivering 30-50% higher yields compared to leading competitor products.

High Purity

Cross-contamination is maintained below 10%, ensuring minimal cytosolic protein carryover in the membrane fraction.

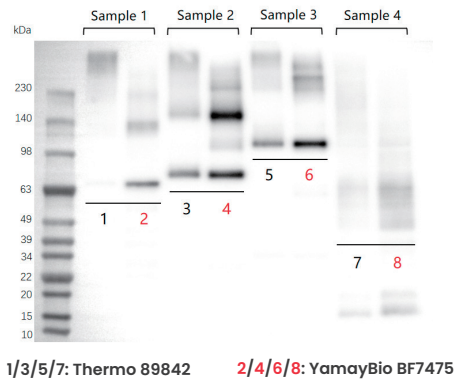
Simplified Workflow

No homogenization, freeze-thaw cycles, or complex pre-treatment steps are required.

Board Compatibility

Suitable for membrane protein extraction from animal cells and tissues. Extracted proteins are compatible with BCA protein quantification, SDS-PAGE, Western blot, and Immunoprecipitation.

Product Comparison

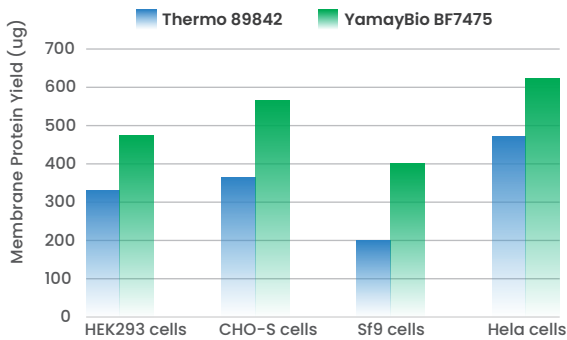
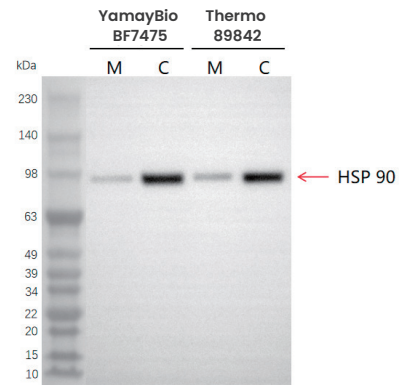


Outperforms Competitors with Higher Target Protein Yield

Figure 1. Four membrane proteins (monomer molecular weights: 70.6 kDa, 78.8 kDa, 103.6 kDa, and 39.8 kDa) were overexpressed in HEK293F cells. Equal cell numbers (5×10^6) were processed using Thermo 89842 and YamayBio BF7475 kits. Western blot detection was performed using an anti-Strep tag II antibody. Lysate loading: 10 μ L per lane.

High-Efficiency Membrane Isolation with Low Cytosolic Cross-Contamination

Figure 2. Membrane (M) and cytosolic (C) fractions were isolated from HEK293F cells using Thermo 89842 and YamayBio BF7475 kits. Western blot analysis was performed using an anti-HSP90 antibody. Lysate loading: 10 μ L per lane.



30 – 50% Higher Membrane Protein Yield Across Multiple Cell Types

Figure 3. Membrane proteins were extracted from 5×10^6 cells across multiple cell lines using Thermo 89842 and YamayBio BF7475 kits. Protein yield was quantified using a BCA protein assay (e.g., Cat. No. BH5484).

Efficient Membrane Protein Isolation from Tissue Samples

Figure 4. Membrane proteins were isolated from 20 mg of mouse heart tissue using the YamayBio BF7475 protocol. Membrane and cytosolic fractions were analyzed by Western blot using various target antibodies.

